

## SPECIFICATIONS

INDOOR

### HOUSING

- Dedicated housing for 6" LED trims (including RCAN56 series)
- Suitable for new construction and rework applications
- Galvanized steel housing

### MOUNTING

- New Construction model comes with nail for easy installation
- Remodel cans come with (4) torsion clips to secure housing (0.5" and 0.6" ceilings recommended)
- Remodel cans install into existing materials with no above access required
- Bar hangers for ICN models are adjustable from 13.6" - 25" and can be positioned up to 90°
- (1) 1.1" and (6) 0.9" knockouts and (4) romex pry-outs with strain relief
- 2-Pin snap-in connector for easy connection to trims

### CODE COMPLIANCE

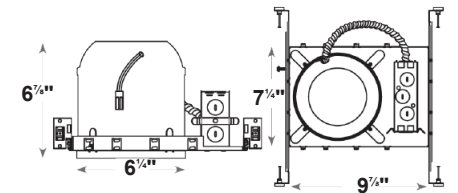
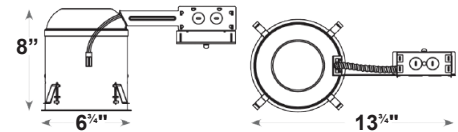
- cULus Listed for Damp Locations
- Listed for through-branch wiring
- Energy Star Qualified
- RoHS Compliant

### WARRANTY

- 5 Year warranty



## DL56 6" LED Dedicated Can



## ORDERING INFORMATION

CATALOG#	Description
DL56-ICN	6" IC Dedicated Can for New Construction
DL56-ICR	6" IC Dedicated Can for Remodel