

SPECIFICATIONS

INDOOR

HOUSING

- Aluminum Housing
- Available in 1x4, 2x2 and 2x4 models

ELECTRICAL

- Quad-Tap (120-277Vac)
- Operating Temperature: -20°C (-4°F) - 40°C (104°F)
- Wattage is adjustable between 30W, 40W, 50W, 60W

OPTICAL SYSTEM

- Acrylic Lens
- Uniform Illumination with no visible LED pixilation
- Color Tunable from 3000K, 4000K, 5000K, 6000K
- 50,000 hours @ L₇₀
- CRI > 80
- 120° Angle

MOUNTING

- Standard Mounting; recessed in grid ceilings
- Surface mounting kit available

CODE COMPLIANCE

- cETLus Listed for Indoor Locations
- Meets UL Requirements
- DLC Listed

WARRANTY

- 5 Year



FP11-KB

Color and Wattage Tunable Backlit Panel

ORDERING INFORMATION

CATALOG #	Size	Wattage	Lumens	Color
FP11-KB-14-1L-QT-CCT	1X4	20W/30W/40W	2600/3900/5200Lm	30K/40K/50K
FP11-KB-22-1L-QT-CCT	2X2	20W/30W/40W	2600/3900/5200Lm	30K/40K/50K
FP11-KB-24-1L-QT-CCT	2X4	30W/40W/50W	3900/5200/6500Lm	30K/40K/50K
FP11-KB-24-2L-QT-CCT	2X4	40W/50W/60W	5200/6500/7800Lm	40K/50K/60K

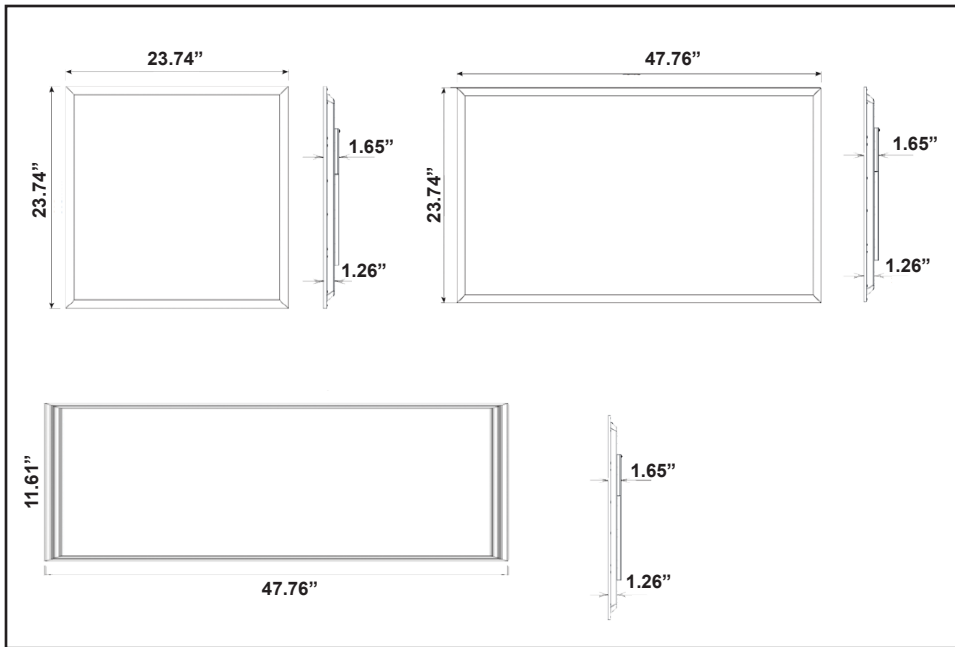
OPTIONS

- EM5W - 5W LED Emergency Backup
- EM12W - 12W LED Emergency Backup

ACCESSORIES

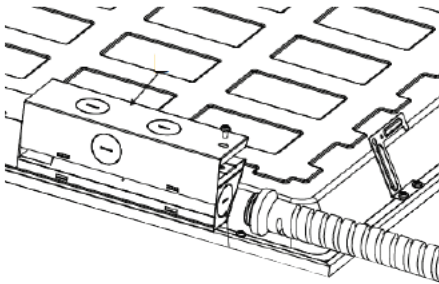
- FP11-KB-SMK14 - 1X4 Surface Mount Kit
- FP11-KB-SMK22 - 2X2 Surface Mount Kit
- FP11-KB-SMK24 - 2X4 Surface Mount Kit

DIMENSIONS

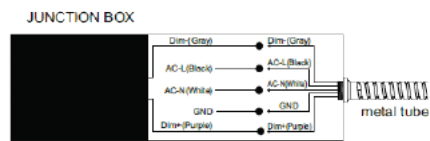


WIRING

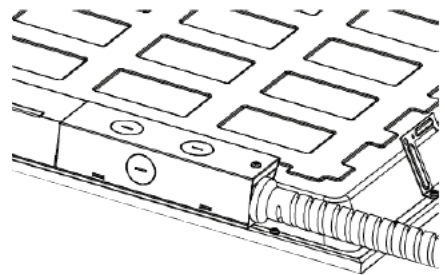
1. Remove the knockout hole on box with screwdriver



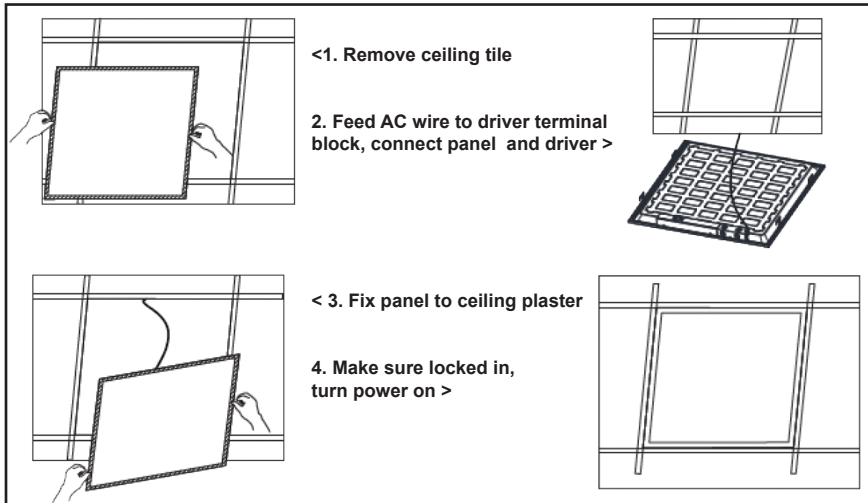
2. Connect wire as pictured



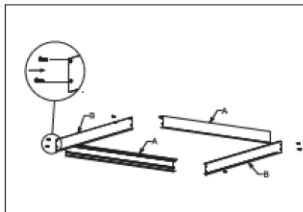
3. Cover driver box and tighten



RECESSED MOUNTING

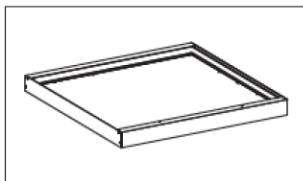
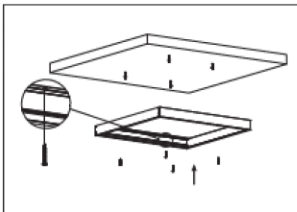


SURFACE MOUNTED

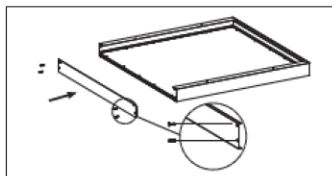


<1. Assemble frame and screws

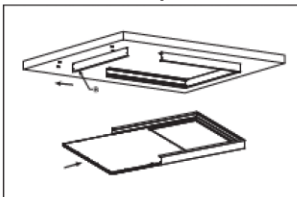
2. Knock plastic anchor into ceiling,
affix SMK o the ceiling with screws >



4. Affix side frame back by screw
v



3. Unscrew side frame, connect
panel to power supply, insert
panel into frame v



^5. Check to see that everything
is secured properly, turn on power