

SPECIFICATIONS

INDOOR

HOUSING

- Galvanized steel housing
- Housing adjustable for thickness up to 1 1/4"
- IC Fire Rated for 120 minutes
- JBox has (5) 1/2" knockouts with pry-out slots and (4) knockouts with Romex cable clamps
- 24" Bar hangers provide support on joists and TBar ceilings
- Housing can be positioned at any point within the 24" joist spacing

ELECTRICAL

- Quad Tap (120-277V) - 11W Model
- 120V - 10W Model
- Power Factor >.90
- THD <20%
- Driver mounts externally to the module for future replacement or upgrading
- Driver has dimming capability with 0-10V Triac and ELV dimmer switches

ILLUMINATION

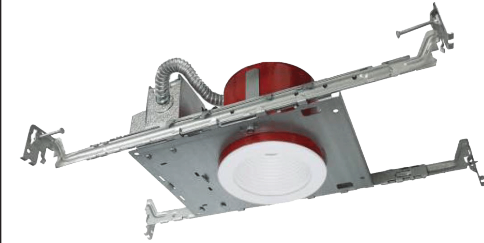
- Offered in 10W (820 Lumens) or 11W Cree (1014 Lumens) models
- CRI: 80 or 90
- 27K - 50K Color Temp
- Tempered glass lens

CODE COMPLIANCE

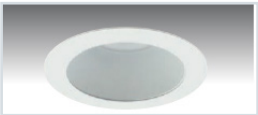
- cETLus Listed for Damp Locations
- Meets UL Requirements
- California Title24
- 120 Minute Fire Rated

WARRANTY

- 5 Year



FRARCFK4 4" Fire Rated Downlight



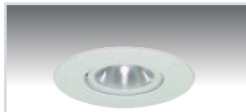
TM1 [O.D: 4 7/8"]
Reflector: HC
PR
CP
WH



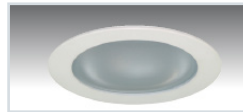
TM2 [O.D: 4 7/8"]
Baffle: WH
BK



TM3 [Frame: 4 3/4" x 4 3/4"]
Square Baffle: WH



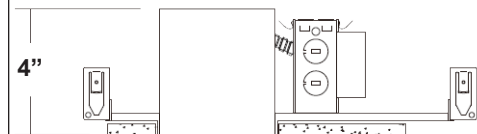
TM4 [O.D: 4 7/8"]
Adjustable Gimbal: WH
BK



TM5 [O.D: 4 7/8"]
Frosted Lens: WH

ORDERING INFORMATION

| MODEL# | Wattage | Driver | CCT | CRI | Reflector | Trim Ring |
|--------------|-------------------|--------------------------------------|-----|-----|------------------|------------|
| FRARCFK4-TM1 | 10L (820 Lumens) | QTD (0-10V Triac & ELV Dimming) | 27K | 80C | Reflector | WH - White |
| FRARCFK4-TM2 | 11L (1014 Lumens) | QL1D (Lutron 1% Dimming) | 30K | 90C | HC (Hazel Clear) | BK - Black |
| FRARCFK4-TM3 | | QL2W (Lutron 1% 2-Wire Dimming-120V) | 35K | | PR (Pewter) | |
| FRARCFK4-TM4 | | | 40K | | CP (Champagne) | |
| FRARCFK4-TM5 | | | | | WH (White) | |
| | | | | | Baffle | |
| | | | | | WH (White) | |
| | | | | | BK (Black) | |



4 1/4"

Ceiling Cut-out 4 1/4"

OPTIONS

EBLED - Emergency Battery