

SPECIFICATIONS

OUTDOOR

HOUSING

- Sealed Aluminum extrusion housing with lens
- White interior and cast aluminum end plates
- Available in 4' and 8' housings
- Socket bar, end plate, and ballast cover snap on easily

ELECTRICAL

- Quad Tap (QT) - 120-277V
- 0-10V Dimmable Driver standard

OPTICAL SYSTEM

- Smooth, clear acrylic diffuser/lens
- Rotatable for specific light aiming
- Offered in 30K, 35K, 40K, 50K

MOUNTING

- Typically mounted on conduit
- End plate doubles as coupler when used in continuous run

CODE COMPLIANCE

- cETLus Listed
- Meets UL Requirements

WARRANTY

- 5 Year
- 10 Year Warranty available



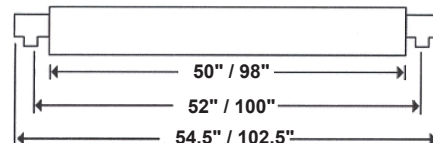
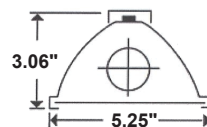
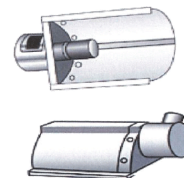
LSLED2-K LED Linear Sign Light

ORDERING INFORMATION

| MODEL# | Length x Wattage | Driver | Color |
|----------|------------------------------|--------|-------|
| LSLED2-K | 4FT | QT | 30K |
| | 4X17L (17W, 3220 Lumens) | | 35K |
| | 4X24L (24W, 4480 Lumens) | | 40K |
| | 4X30L (30W, 5705 Lumens) | | 50K |
| | 4X37L (37W, 6910 Lumens) | | |
| | 4X48L (48W, 8640 Lumens) | | |
| | 4X70L (70W, 11,797 Lumens) | | |
| | 8FT | | |
| | 8X17L (17W, 3220 Lumens) | | |
| | 8X24L (24W, 4480 Lumens) | | |
| | 8X30L (30W, 5705 Lumens) | | |
| | 8X37L (37W, 6910 Lumens) | | |
| | 8X48L (48W, 8640 Lumens) | | |
| | 8X70L (70W, 11,797 Lumens) | | |
| | 8X74L (74W, 13,820 Lumens) | | |
| | 8X96L (96W, 17,280 Lumens) | | |
| | 8X140L (140W, 23,594 Lumens) | | |

OPTIONS (Factory Installed)

EM - Emergency Battery

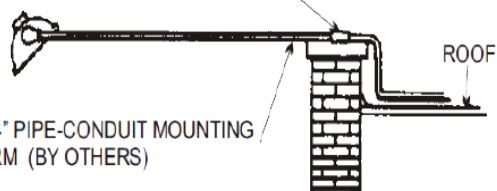


TYPICAL INSTALLATIONS

BUILDING MOUNTING

SADDLE STRAP ANCHORED
TO COPING (BY OTHERS)

3/4" PIPE-CONDUIT MOUNTING
ARM (BY OTHERS)

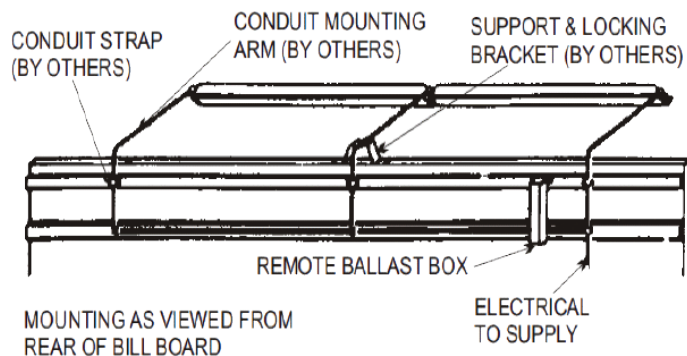


ROOF

BUILDINGS

A natural for store-front and service station lighting.
With this unit the store-front or service station is lighted
uniformly from roof to grade.

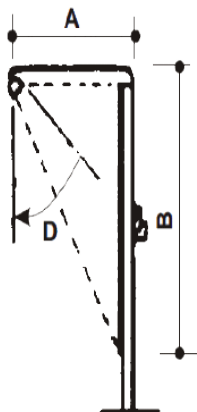
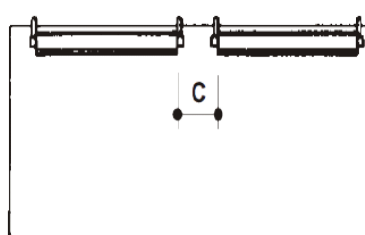
BILLBOARD MOUNTING



BILLBOARDS

Balanced high light output gives the advertising message greater
impact. Copy and illustrations stand out and color distortion is virtually
eliminated. Complete vertical surface is covered with a minimum of
gradation and "hot spots" are eliminated.

LUMINAIRE SPACING AND MOUNTING



1. Dim. C should not exceed dimensions of A.
2. Dim. B should be twice the dimension of A.
3. If Dim. B exceeds 15 ft. then luminaires should be installed at top and bottom of area to be illuminated.
4. Angle of Dim. D should be 45° if dimensions are as outlined in paragraph No. 2. If Dim. A is four times less than Dim. B then angle should be 22.5°.

INDIVIDUAL



CONTINUOUS RUN

