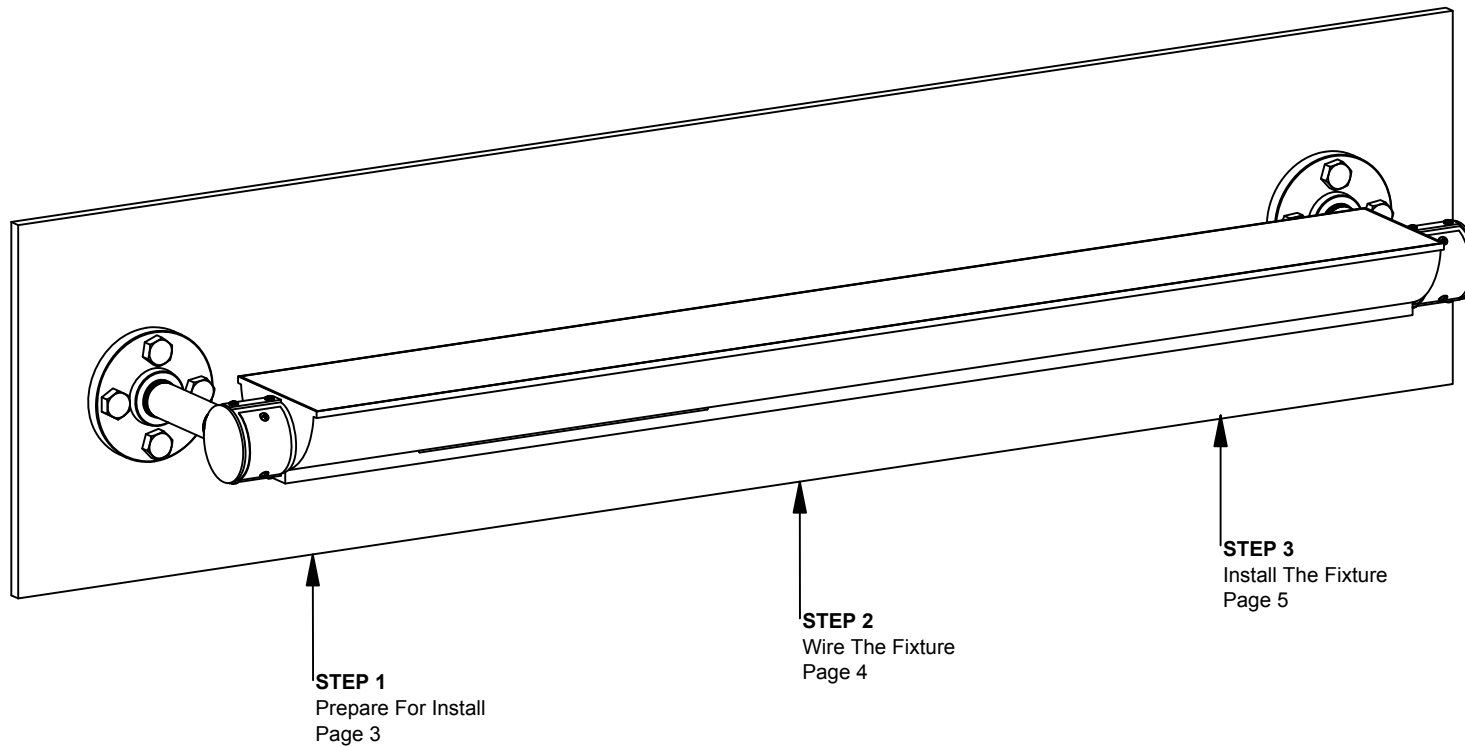


LSLED2 Installation Instructions

Overview

WARNINGS

- This product must be installed in accordance with all applicable codes by a person familiar with the product.
- Each fixture must be **properly supported** during install.
- **DO NOT** join fixtures on the floor prior to lifting, or damage will occur.
- **Before beginning installation**, review our complete list of warnings by visiting www.saylite.com/warnings.

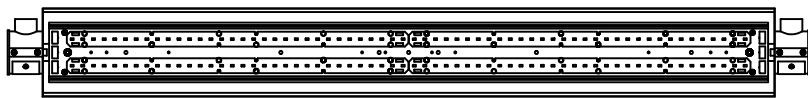


Preparation - Tools/Parts Identification

A. Identify Fixtures

- Use labels found on the box and inside fixture bodies to identify bodies.
- **NOTE:** Locations of labels can vary.
- Remove all fixtures from their boxes.
- Organize fixtures based on their labels at the install location.

C. Identify Parts



LSLED2 Fixture
(Provided)

- Read entire install instructions before beginning installation.
- Unpack all components and arrange in order of install steps.
- For help with installation, please contact us at www.versaLEDlighting.com or call us at (800) 490-4496.

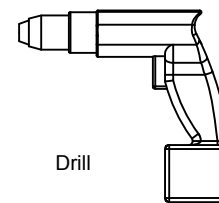
B. Tools Needed



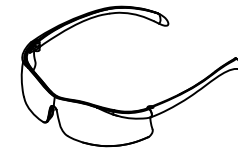
Phillips Screwdriver



Drill Bit

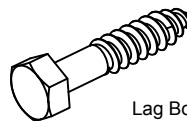


Drill

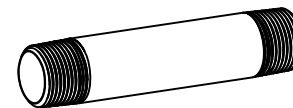


Safety Glasses

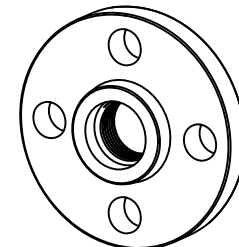
- Always use proper safety equipment when installing fixtures.
- Tools shown are recommended for standard install. Tools needed may vary based on actual install location conditions.



Lag Bolt
(By Others)



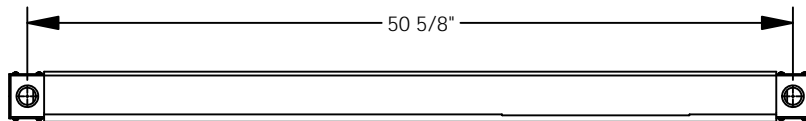
1" x 6" Threaded Pipe Nipple
(By Others)



Threaded Pipe Flange
(By Others)

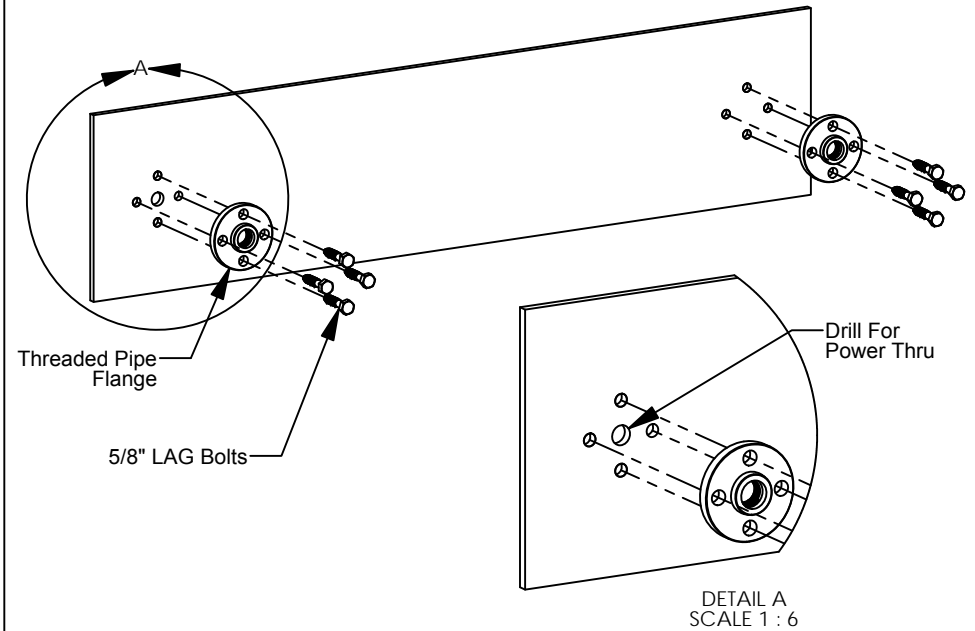
Step 1 - Prepare For Install

A. Transfer Measurements



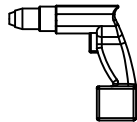
- Confirm that the distance shown between mounting locations above matches your fixture.
- Transfer the dimensions to the desired location on the mounting surface.

B. Mount Threaded Flange



- Determine the power side, then drill hole on center of transferred \varnothing for that side.
- After marking the mounting locations, install threaded pipe flanges (by others) as shown above.
- Secure the flanges with LAG bolts as shown.
- **Important: The MTG surface and hardware must be able to properly support the fixture weight.**

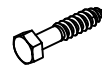
Items Used In This Step



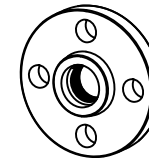
Drill



Drill Bit

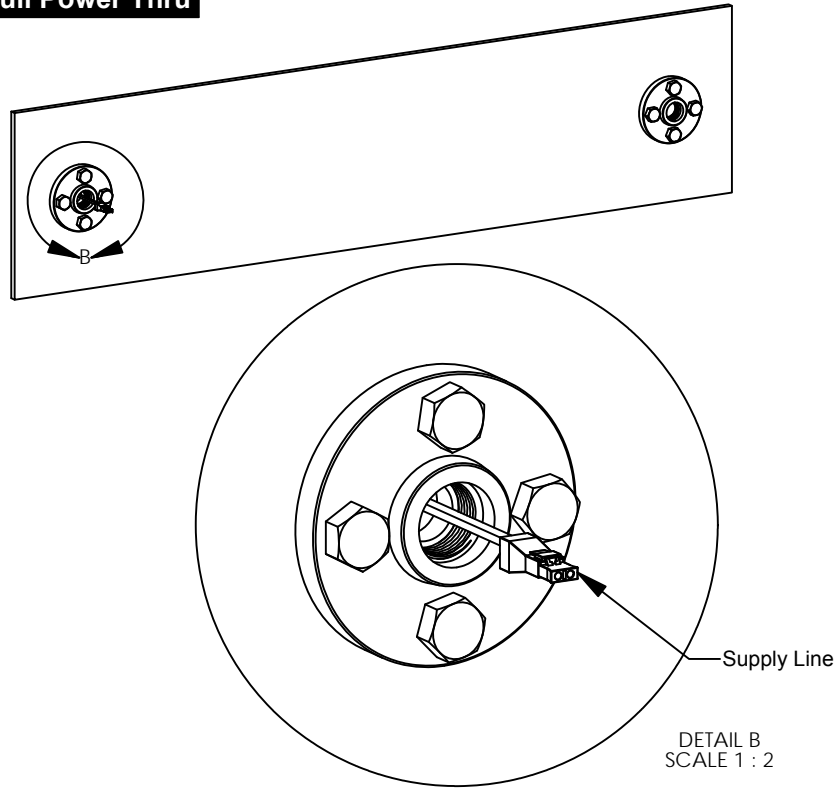


LAG Bolt
(By Others)



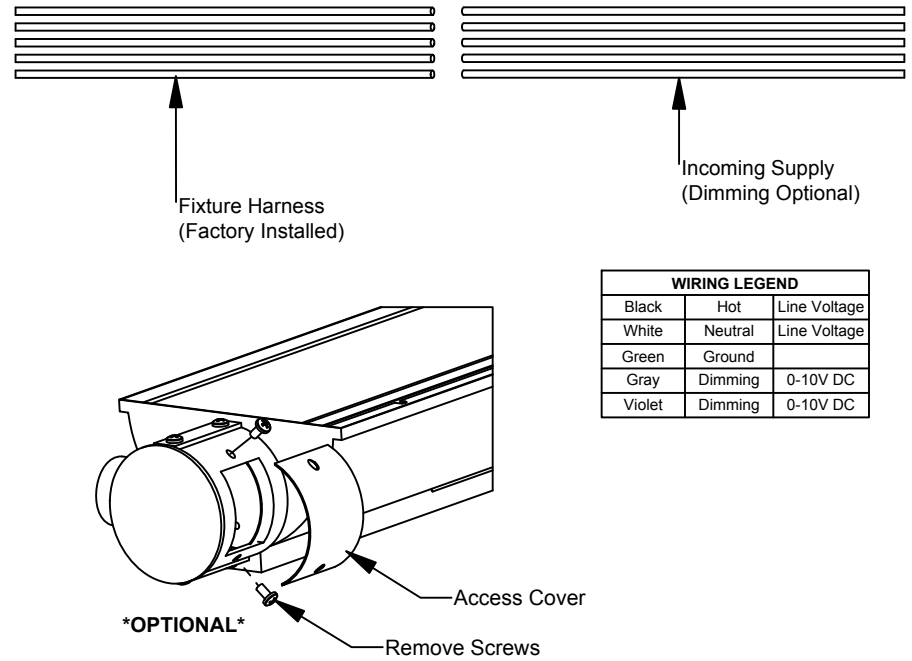
Threaded Pipe Flange
(By Others)

A. Pull Power Thru



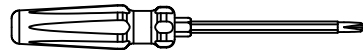
- Pull the supply line thru the hole drilled in the mounting surface and thru the installed pipe flange.

B. Connect The Wiring



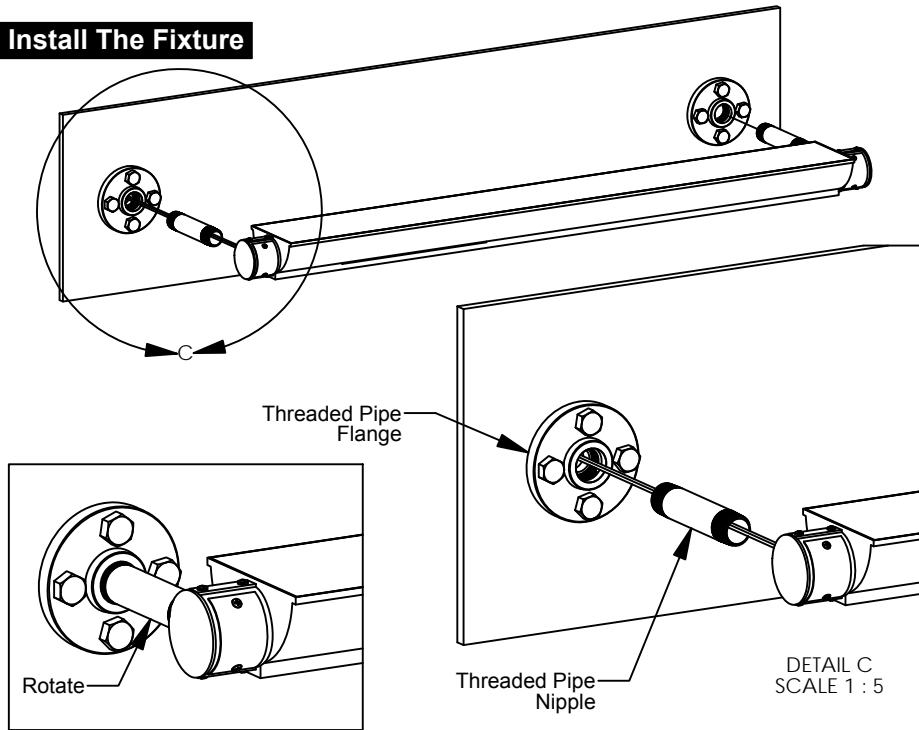
- Wire the fixture to the incoming supply. Refer to the wiring legend above as needed.
- **Note:** Use UL approved connectors only. Follow all local, state and national codes.
- **Optional:** It may be necessary to remove the wire access cover by removing the (2) screws as shown.

Items Used In This Step



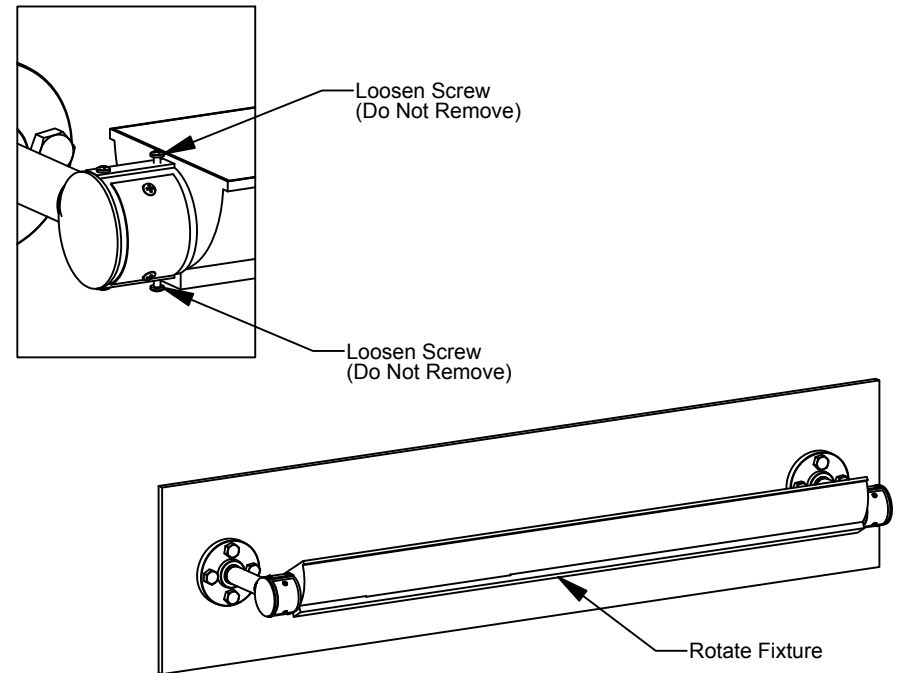
Phillips Screwdriver

A. Install The Fixture



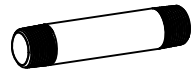
- Line up the fixture, the 1" x 6" threaded nipple, and the threaded pipe flange on both ends.
- Press all together, and rotate the threaded pipe nipples clockwise to tighten.

B. Adjust The Fixture

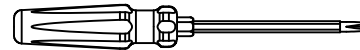


- To adjust the fixture, loosen (**DO NOT REMOVE**) the inside screws shown on each fixture end.
- Rotate the fixture body to the desired angle for best illumination.
- Tighten the screws again to secure the fixture. Install is now complete.

Items Used In This Step



1" x 6" Threaded Pipe Nipple
(By Others)



Phillips Screwdriver